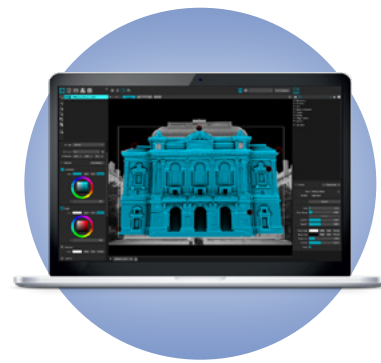


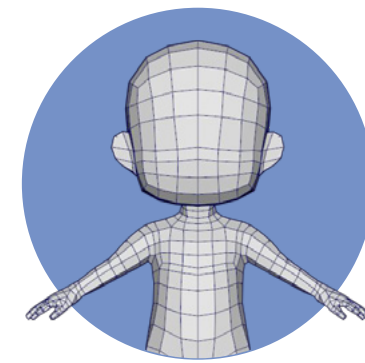
Technologies and Equipment You'll Need to Build Your Projection Mapping Experience

EPSON®



Mapping software

Used to create, edit, and map content onto your chosen surface, your mapping software calibrates and aligns your visuals properly. Popular choices include MadMapper, Watchout, and Green Hippo.



3D modeling

If you will be projecting on a 3D object, you'll need to create a model of your 3D object using modeling software such as Blender or Maya. When done, you can export the file in an OBJ format, for example, to import to your mapping application.



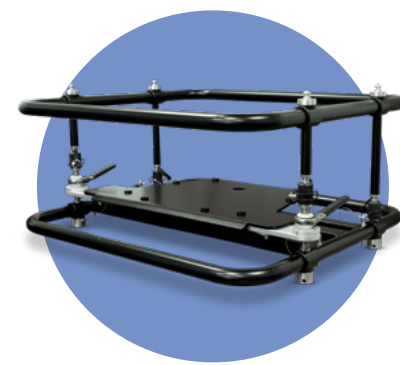
Dedicated media servers

Particularly for more complex mapping projections, media servers can help control — and synchronize — all your projectors. They render and playback the content in real time, seamlessly blending your images.



Audio equipment

Depending on the specifics of your immersive experience, you may need speakers and amplifiers to accompany the visual experience with sound.



Rigs and mounting gear

Specialized rigging gear helps you safely mount and position your projectors, ensuring optimal coverage and alignment.



Cables and adaptors

You will need video or ethernet cables and converters to connect media servers to your projectors.



Projectors

Look for high-quality, bright projectors for the most vivid display. The number and types of projectors you choose will depend on your budget and the scale of the display. For maximum flexibility, choose projectors with interchangeable lenses.

To learn more or speak with an Epson expert, visit Epson.com/LargeVenue